

2015 Festival Schedules

	Sun	Mon	Tue	Wed	Thu	Fri	Sat
May						1	2
	3	4	5	6	7	8	9
	10	11	12	13	14	15	16
	17	18	19	20	21	22	23
	24	25	26	27	28	29	30
	31						
Jun		1	2	3	4	5	6
	7	8	9	10	11	12	13
	14	15	16	17	18	19	20
	21	22	23	24	25	26	27
	28	29	30				
Sep			1	2	3	4	5
	6	7	8	9	10	11	12
	13	14	15	16	17	18	19
	20	21	22	23	24	25	26
	27	28	29	30			
Oct					1	2	3
	4	5	6	7	8	9	10
	11	12	13	14	15	16	17
	18	19	20	21	22	23	24
	25	26	27	28	29	30	31
			1	2	3	4	5
Dec	6	7	8	9	10	11	12
	13	14	15	16	17	18	19
	20	21	22	23	24	25	26
	27	28	29	30	31		
2016 Jan						1	2
	3	4	5	6	7	8	9
	10	11	12	13	14	15	16
	17	18	19	20	21	22	23
	24	25	26	27	28	29	30
31							

- May 29-May 31 : Chuncheon International Mime Festival
- Jun 19-Jun 21 : Gangneung Danoje
- Sep 4-Sep 6 : Pyeongchang Hyoseok Festival
- 2015 Gangwon K-POP Festival(Not confirmed)
- Oct 2-Oct 4 : Gangneung Coffee Festival
- Oct 2-Oct 4 : Jeongseon Arirang Festival
- Oct 9-Oct 11 : Hoengsung Hanu Festival
- Yangyang Songi Festival(Not confirmed)
- Dec 18-Dec 20 : Pyeongchang Trout Festival
- Hwacheon Sancheoneo Ice Festival(Not confirmed)
- Taebaek Mountain Snow Festival(Not confirmed)
- Inje Bingeo Festival(Not confirmed)

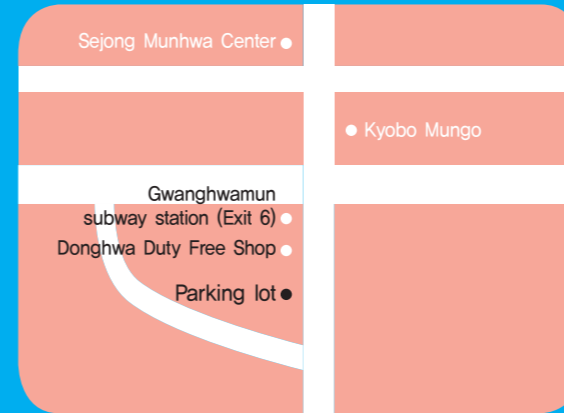
※The schedule could be changed as the festival circumstances

Accommodations in Gangwondo

Gangneung	Kyungposoo Motel	033-644-1239
	Donga Hotel	033-648-4411
	Motel Hill	033-642-8985
	Carib Motel	033-641-2355
	Dawoori Motel	033-644-1771
	Davinchi Motel	033-644-5043
	Joomunjin Motel	033-661-0123
	Tops Vill Motel	033-643-1054
	VV Hotel	033-647-2222
	Jeongdong Castle	033-644-3422
Yanggu	Four Season Pension	033-481-6666
Sokcho	New-star Seorak Resort	033-637-2239
	Chowon Resortel	033-636-7169
	Cheoksan Hweuyangchon	033-636-4000
	Smile Resort	033-636-7117
	Ritzcal Hotel	033-636-5252
	Cheoksan Oncheonjang	033-636-4806
	Songwol Park	033-636-7029
	Korea Motel	033-636-7282
	Donghae Condot	033-635-9631
	Memories Motel	033-636-9415
Pyeongchang	Hellios Motel	033-632-7676
	Fairy in the forest	033-336-2225
	Daegwanryeong Bang	033-335-5581
	California Motel	033-332-8481
	Baryon Resort	033-335-8001
	Hyundai Village	033-334-7775
Cheorwon	Sun Leisure-tel	033-456-2120
Hoengsung	Tiffany Motel	033-344-2274
Jeongseon	Highland Hotel	033-591-3500
	Moon Hotel	033-591-0707
Taebaek	Donga Motel	033-552-2365
	Sky Hotel	033-554-0234
	Condo & Resort	033-580-7000
Inje	Fine Valley Hotel	033-462-8955
	Haneul Naerin Hotel	033-463-5700

Boarding Place

Departure (08:00AM) / Ticketing (07:30AM)



◆ Parking lot of Donghwa Duty Free Shop in Gwanghwamun subway station (Exit 6) ◆

Boarding place for return
→ The main parking lot of festival venue

How to use Gangwon Shuttle

- Step1** Access to <http://gogogangwon.com>
- Step2** Sign In (to make ID & Password)
- Step3** Click "Book online" and choose your date in the calendar
- Step4** Make the payment for shuttle charge **₩5,000 won (Round trip)**
- Step5** After payment, reservation confirmed. (E-ticket is delivered via email)

FESTIVAL SHUTTLE

Seoul~Gangwondo Festival Link Shuttle Bus

May/2015 - Jan/2016



(주)동보여행사

www.gogogangwon.com
☎ 1600-6972 (English/Japanese/Chinese)

01 Festival Information

※The detail schedules can be changed on the circumstances ※



Chuncheon International Mime Festival

<http://www.mimefestival.com>
The Chuncheon International Mime Festival presents a wide array of performances by hundreds of performing arts teams from Korea and abroad. Chuncheon is easily accessible by public transportation

07:30 Boarding→08:00 Departure→09:30 Bathroom break(15min)→11:30 Arrival→4 hours Free time for festival→15:30 Boarding→16:00 Departure→17:30 Bathroom break(15min) →20:00 Arrival in Seoul

- ▶ Location : Chuncheon-si
- ▶ Main programs : Mime / Dance performances etc.



Gangneung Danoje

www.danojefestival.or.kr
The Gangneung Danoje Festival was designated a 'Masterpiece of the Oral and Intangible Heritage of Humanity' by UNESCO

07:30 Boarding→08:00 Departure→09:30 Bathroom break(15min)→11:30 Arrival→4 hours Free time for festival→15:30 Boarding→16:00 Departure→17:30 Bathroom break(15min) →20:00 Arrival in Seoul

- ▶ Location : Namdaecheon Stream, Danojang area
- ▶ Main programs : Korean traditional event/ performance

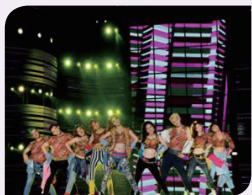


Pyeongchang Hyoseok Festival

<http://www.hyoseok.com>
Hyoseok Cultural Festival is held to commemorate modern Korean writer Lee Hyo-seok and his popular novel 'When Buckwheat Flowers Bloom'

07:30 Boarding→08:00 Departure→09:30 Bathroom break(15min)→11:30 Arrival→4 hours Free time for festival→15:30 Boarding→16:00 Departure→17:30 Bathroom break(15min) →20:00 Arrival in Seoul

- ▶ Location : Bongpyeong-myeon Culture Village
- ▶ Main programs : Poem exhibition / Local foods market



2015 Gangwon K-POP Festival

www.kpopfestival.org
To wish the success of 2018 Pyeongchang Winter Olympics and spread K-POP to the world, Gangwon has been held this international music festival every year.

- ▶ Location : Jeongseon
- ▶ Main programs : K-POP Concert / Dance performance

02 Festival Information

※The detail schedules can be changed on the circumstances ※



Gangneung Coffee Festival

www.coffeefestival.net
The festival celebrates the emerging coffee culture of Gangneung-si, a city that in recent years has welcomed in famous coffee chain.

07:30 Boarding→08:00 Departure→09:30 Bathroom break(15min)→11:30 Arrival→4 hours Free time for festival→15:30 Boarding→16:00 Departure→17:30 Bathroom break(15min) →20:00 Arrival in Seoul

- ▶ Location : Gangneung Gymnasium
- ▶ Main programs : International coffee exhibition / Performances / Coffee market



Jeongseon Arirang Festival

www.arirangfestival.kr
This festival takes the theme of 'Jeongseon Arirang', a variation of the Korean folk song 'Arirang', which was developed in the Jeongseon province.

07:30 Boarding→08:00 Departure→09:30 Bathroom break(15min)→11:30 Arrival→4 hours Free time for festival→15:30 Boarding→16:00 Departure→17:30 Bathroom break(15min) →20:00 Arrival in Seoul

- ▶ Location : Jeongseon Arari Park area
- ▶ Main programs : Traditional experience events / Market



Hoengsung Hanu Festival

www.hshanu.or.kr
Hanu(Korean native cattle) Festival takes places in Hoengsung County, where the climate and the environment are said to be perfect for raising cattle.

07:30 Boarding→08:00 Departure→09:30 Bathroom break(15min)→11:00 Arrival→4.5 hours Free time for festival→15:30 Boarding→16:00 Departure→17:30 Bathroom break(15min) →20:00 Arrival in Seoul

- ▶ Location : Seomgang River area
- ▶ Main programs : Hanu cooking contest / foods tasting



Yangyang Songi Festival

<http://song-i.yangyang.go.kr>
The songi pine mushroom of Yangyang is referred to as a diamond in the woods. This festival is a great opportunity to discover the mushroom's ecology and experience picking them in the mountain for visitors.

07:30 Boarding→08:00 Departure→09:30 Bathroom break(15min)→11:30 Arrival→4 hours Free time for festival→15:30 Boarding→16:00 Departure→17:30 Bathroom break(15min) →20:00 Arrival in Seoul

- ▶ Location : Namdaechun area
- ▶ Main programs : Picking mushrooms / local foods market etc.

03 Festival Information

※The detail schedules can be changed on the circumstances ※



Pyeongchang Trout Festival

<http://festival700.or.kr>
Pyeongchang Trout Festival takes place during winter season and visitors to the festival can enjoy the various programs like ice trout fishing and snow games.

07:30 Boarding→08:00 Departure→09:30 Bathroom break(15min)→11:30 Arrival→4 hours Free time for festival→15:30 Boarding→16:00 Departure→17:30 Bathroom break(15min) →20:00 Arrival in Seoul

- ▶ Location : Pyeongchang Odaechun area
- ▶ Main programs : Ice fishing / Snow programs etc.



Hwacheon Sancheoneo Ice Festival

www.narafestival.com/01_icenara
Visitors can try out ice fishing, and those who are feeling brave can try to catch mountain trout with their bare hands in this festival.

07:30 Boarding→08:00 Departure→09:30 Bathroom break(15min)→11:00 Arrival→4.5 hours Free time for festival→15:30 Boarding→16:00 Departure→17:30 Bathroom break(15min) →20:00 Arrival in Seoul

- ▶ Location : Hwacheon Stream area
- ▶ Main programs : Sancheoneo fishing / Winter events



Taebaek Mountain Snow Festival

festival.taebaek.go.kr
Enjoy unforgettable winter memories at Taebaeksan Mountain Snow Festival

07:30 Boarding→08:00 Departure→09:30 Bathroom break(15min)→11:30 Arrival→4 hours Free time for festival→15:30 Boarding→16:00 Departure→17:30 Bathroom break(15min) →20:00 Arrival in Seoul

- ▶ Location : Taebaeksan Provincial Park area
- ▶ Main programs : Ice exhibition / Winter events



Inje Bingeo Festival

www.injefestival.co.kr
At this spectacular winter festival visitors will be able to try out ice fishing and exciting games such as human bowling on ice, ice soccer, and even a tug-of-war on ice.

07:30 Boarding→08:00 Departure→09:30 Bathroom break(15min)→11:30 Arrival→4 hours Free time for festival→15:30 Boarding→16:00 Departure→17:30 Bathroom break(15min) →20:00 Arrival in Seoul

- ▶ Location : Injedaegyo Bridge area
- ▶ Main programs : Bingeo fishing / Winter events

04 Locations in Gangwondo



Gangwondo, the fun-filled province for seasonal pleasures is one of the eight provinces of Korea and consisted of 18 small cities around. Gangwondo which is the host of the 2018 Pyeongchang Winter Olympics is the most attractive province for visitors travelling Korea.

Must-eat foods in Gangwondo



Overseas ☎ 82-2-1600-6972
shuttle@gogogangwon.com